

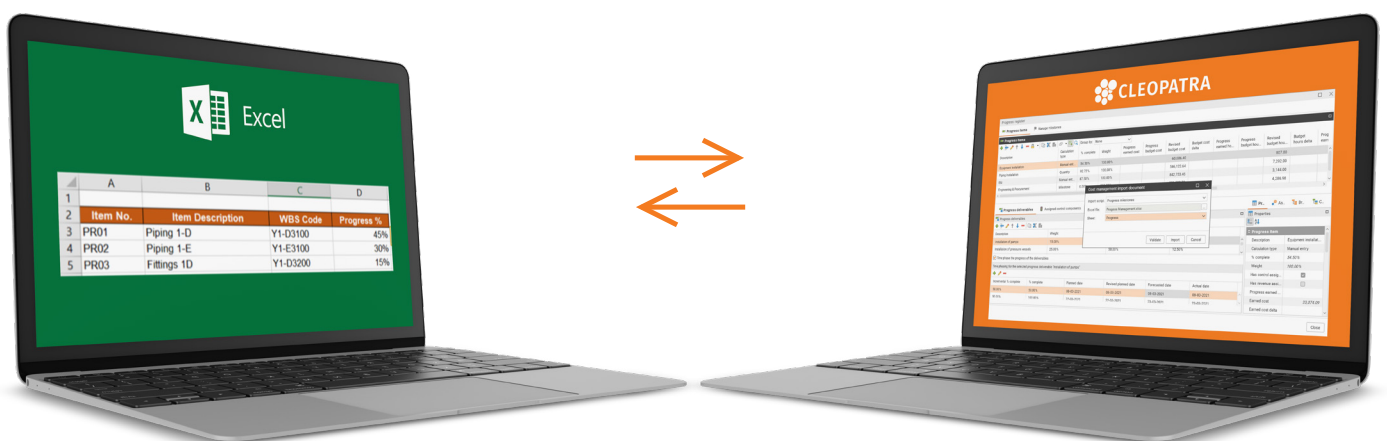
# Integrations

Through the **extensive interfacing** possibilities of **Cleopatra**, you can **import from and export** to different software solutions with ease.



In project controls, you often need to gather information from different sources, and in return, you need to make information available to other programs. The **Interfacing** support most of the main modules, and they are not stand-alone modules.

A great example is Excel Interfacing which can **import & export** documents, create estimates based on **bill of quantities** and smoothly **update estimates**. This is a standard interfacing and available for all modules of Cleopatra.



The other interfacings are as follows:

**UniSim Design Interface, Primavera P6, SAP, Web Services, Power BI and BIM.**



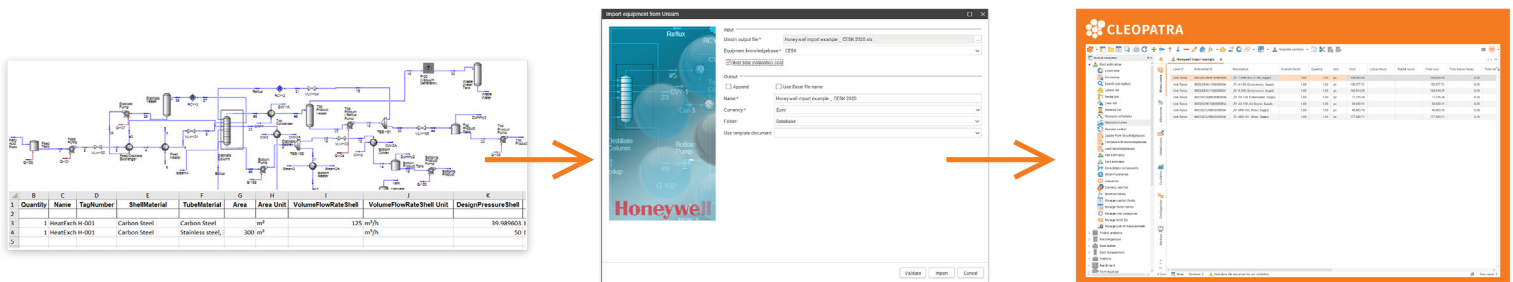
# UniSim Design Interface

The UniSim Design Interface, available as part of the Cost Estimating Standard module, enables users of the **Honeywell UniSim Design Suite** to derive cost estimates from various process simulation designs quickly.

After the export of the cost parameters of the main equipment, Cleopatra Enterprise can use

these parameters to estimate the cost using the available parametric cost models for the corresponding equipment.

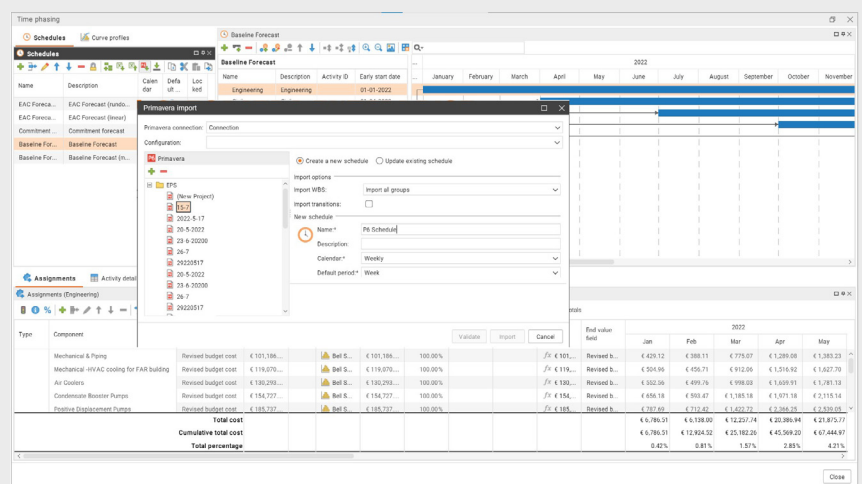
This module, hence, allows for a quick comparison of various alternative process designs, letting the user select the economically most attractive project design alternative fast.



# Primavera P6 Interfacing

The **Primavera P6 Interfacing** allows for seamless synchronization of your Primavera schedule and your Cleopatra Cost Estimating, not only saving time but also increasing the efficiency of both applications.

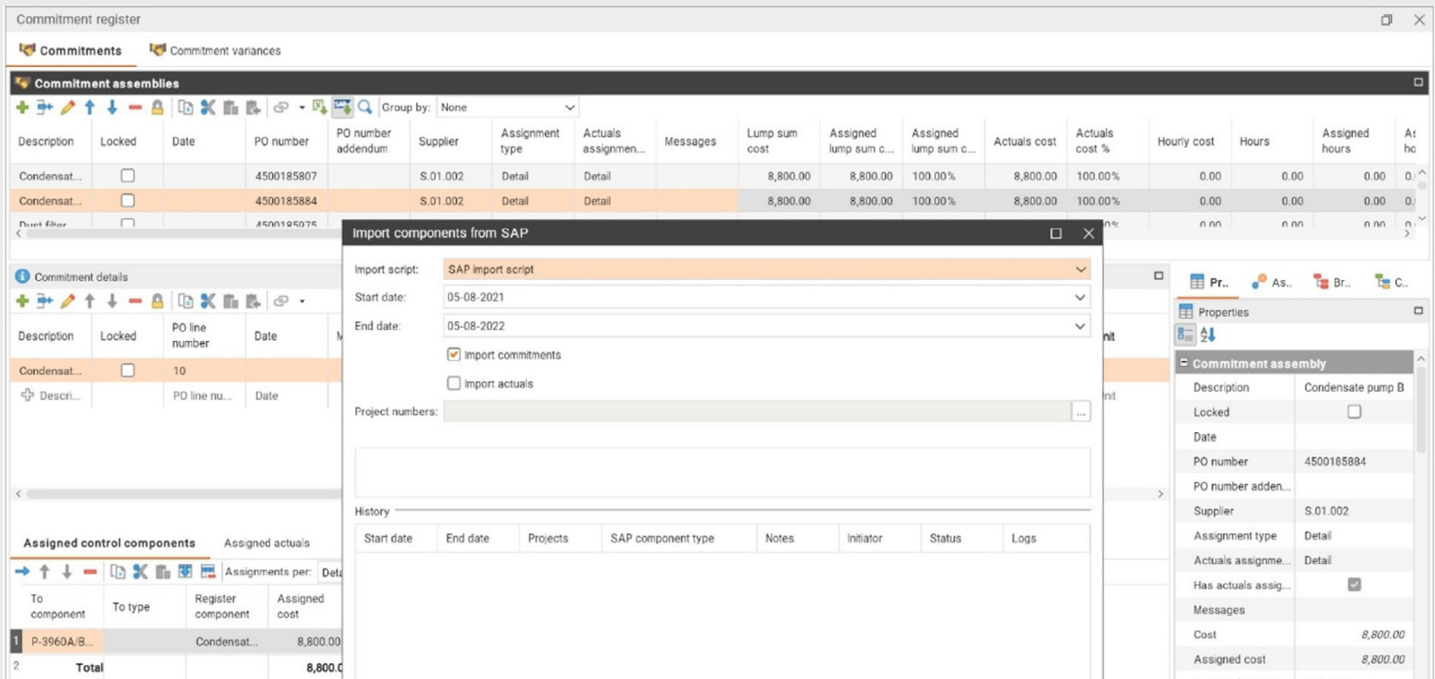
No more copying and pasting, no more importing and exporting. Estimators can instantly create work breakdown structures directly from a Primavera schedule by using this add-on module.



Likewise, schedulers can automatically transfer budget costs and resources from an estimate to a schedule. Moreover, the data exchange is completely configurable, enabling users to specify what and how data is transferred between the systems.

As a commonly used software pack, **SAP** authorizes you to manage your invoices. Cleopatra Enterprise offers SAP interfacing that enables you to translate the viewed data in SAP and interpret it in a cost management document.

With this add-on module, you can further import and view crucial cost management elements - from purchase orders and timesheets to goods receipts and financial postings.



The screenshot displays the 'Commitment register' window with a tab for 'Commitment assemblies'. A table lists assemblies with columns for Description, Locked, Date, PO number, PO number addendum, Supplier, Assignment type, Actuals assignment, Messages, Lump sum cost, Assigned lump sum cost, Assigned lump sum cost %, Actuals cost, Actuals cost %, Hourly cost, Hours, Assigned hours, and At hc. Two assemblies are visible: 'Condensat...' with PO number 4500185807 and 'Condensat...' with PO number 4500185884. An 'Import components from SAP' dialog is open, showing 'Import script: SAP import script', 'Start date: 05-08-2021', 'End date: 05-08-2022', and checkboxes for 'Import commitments' (checked) and 'Import actuals'. A 'Properties' pane on the right shows details for a 'Commitment assembly' with Description 'Condensate pump B', PO number '4500185884', Supplier 'S.01.002', and Assigned cost '8,800.00'.

## Web Services Interfacing



Cleopatra's **Web Services Interfacing** facilitate advanced and easy integration between Cleopatra solutions and other web-based applications. Linking Cleopatra with web apps for data exchange, you can securely import data to Cleopatra Enterprise and export the stored-in data to another app.

This add-on module aims to save you time and effort by reaping the benefits of out-of-the-box solutions without the need to write any additional code.

*Cleopatra 's web server and database server communicate over the same private network to limit the security risks.*

Furthermore, Web Services lets you generate reports with insight into the process of sending a request and receiving a response, visualized in statistics, graphs, and more. This way, you can easily monitor when requests are received and responses are sent and quickly detect errors.

# Power BI Interfacing

The Power BI connector operates as an interactive data analytics and visualization tool for creating reports and dashboards easily and quickly based on the project data in Cleopatra Enterprise.

This interfacing helps you inspect the health of your projects and gain deeper project insights. Power BI can be connected to several modules of Cleopatra, such as cost estimation, cost management, form tracking management, WPM, and benchmarking.



# BIM Interface

Using traditional building design models leads to a drastic amount of information loss, especially when handling a project with multiple teams working on their parts separately.

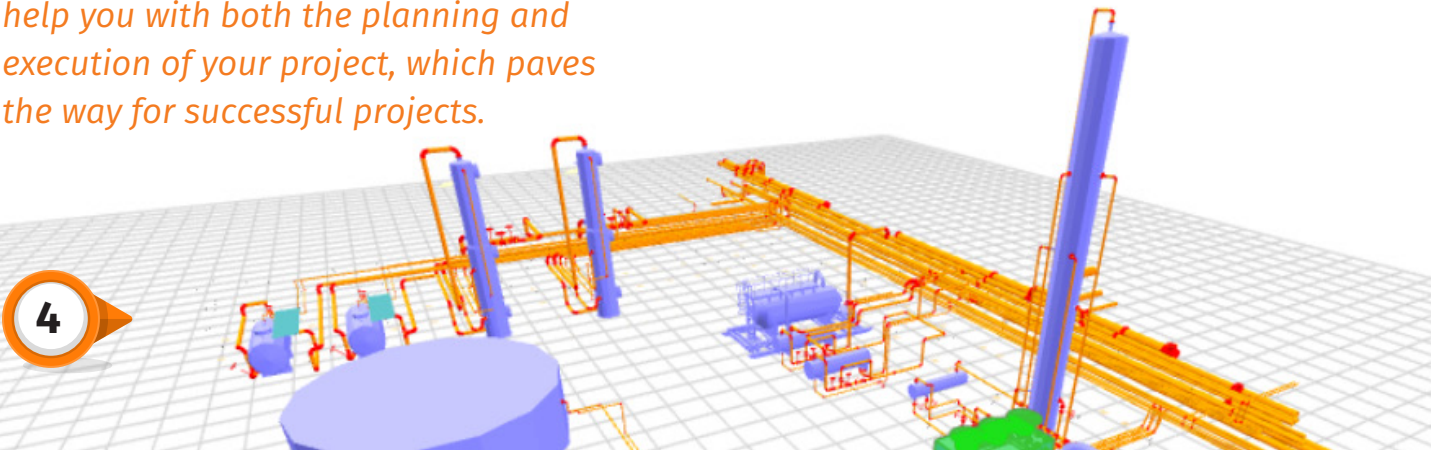
**Cleopatra's Building Information Modeling (BIM) solution breaks the silos and lets all teams work together using a single model.**

Each team can add and reference back to all information within the same project by adopting a design-based approach in modeling and work sequencing via Cleopatra.

Combining data-rich 3D models in a real-world setting, the BIM module can help you with both the planning and execution of your project, which paves the way for successful projects.

The BIM interface allows you to use an interactive 3D visualization of an IFC model to create an estimate based on that model easily. That's how the solution defines each item and potential objects (like pipes, heat exchangers, walls, etc.) with 3D visualization and indicates the location and the system each item belongs to.

In other words, the BIM interface produces a large amount of valuable data in a digital format to inform and analyze the whole project process. Thus, the add-on module grants you to rely on exact quantities during the planning & scheduling phase, polish the project details, and analyze the potential problems in advance.





Improve the performance of your next project  
with Cleopatra Enterprise

 [www.cleopatraenterprise.com](http://www.cleopatraenterprise.com)

